

EASTER Camp Information



CAMP



Camp officially begins at 7.00pm on Thursday 13 April, and will conclude at 2.00pm on Monday 17 April



Araluen Lutheran Camp
24 McDougall Street
Anglesea, VIC

Map: www.eastercamp.com.au/map

From Melbourne, take the M1 (Princes Freeway) towards Geelong.

Continue on the M1, follow signs and take exit C134 for Torquay/Anglesea. Follow signs for Anglesea.

On approach into Anglesea, turn right into Beteleigh Street. Follow around the bend. Araluen Campsite is on the left-hand side.

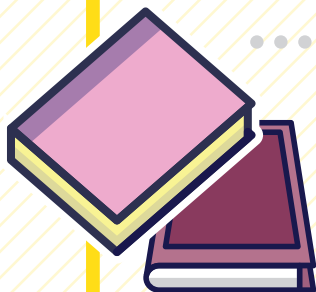


Driving to camp this year? Help us carpool!

If you are driving and:

- + Hold a current drivers' licence
- + Have been on your full licence for two years or more
- + Have room for passengers

It would be great if you can help us out with transportation! We require drivers for a few short trips that occur throughout camp. Please contact the camp director, Liam Hensel, directly or send an email to contact@eastercamp.com.au if you're able/willing to help!



Camp Library

Reading a good book or devotional resource? Got a few great Christian tomes sitting on your bookshelf? Bring them along for others to read through our camp library! Just make sure your name is in the cover so we can ensure your books come back to you at the end of camp.



Camp Set-Up & Pack Down

If you're able to get down to Anglesea on Thursday afternoon (before camp begins) to assist with setting up camp, please let us know - you may even be rewarded with delicious dinner!



Easter Camp is a 100% drug and alcohol free event.

SEE YOU AT ARALUEN
FOR #EC2017!



QUERIES OR QUESTIONS BEFORE CAMP?

WE'D LOVE TO HELP!

contact@eastercamp.com.au



EASTER

Things to Bring

CAMP



Food to share!

Please bring something that can be shared for morning tea and smaller breaks throughout camp. For food safety reasons, please store-bought food only.

Araluen is also a NUT FREE ZONE, so please refrain from bringing anything that contains nuts!



Sunday Night: Bush Dance!

This year Easter Camp is celebrating Easter Sunday night with a boot-scootin' bush dance!

Dust off the akubra, shake the cobwebs out of your best pair of workboots, throw on your best flannel shirt and dress up for the hippest, happiest hoedown Easter Camp has ever seen!



- Bible
- Journal/Paper
- Pens & Pencils
- Clothing
Including some cold/wet weather gear
- Hat
- Sunscreen
- Bathers
- Towel
- Toothbrush & Toiletries
- Pillows
- Sleeping Bag or Bedding
Including a bottom sheet

- Required Medication
- Torch
- Bush Dancin' Garments!

.....

OPTIONAL ITEMS

- Lollies/Chocolate
- Sports Equipment
- Board & Card Games



Registration Forms

Remember to bring along a signed, and completed copy of your camp registration form, as we need to have a copy on file before you're able to participate in camp activities - especially important for those under 18 years of age. Don't leave home without it!

